

Aufführungsgerecht
gehalten

eil!

Um Mitternacht.

(Rückort)

Nik. 50131
GUSTAV MAHLER ARCHIV

70152

Gustav Mahler.

ausgabe für ^{Stimmen} *Ruhig, gleichmäßig.*

Brang

Platten pariser format

Clarin

pp

m. s.

Sehr gehalten.

rit.

gr. d.

rit.

gr. d.

sehr gebunden. Etwas fließender.

a tempo

espress.

Nicht schleppen.

Handwritten musical score for the first system, featuring a treble clef and a 4/2 time signature. The notation includes a melodic line with a fermata and a complex piano accompaniment with various chords and rhythmic patterns. A tempo marking of 6/8 is indicated above the staff.

Handwritten musical score for the second system, continuing the melodic and piano parts. It includes dynamic markings such as *rit.* and *Tempo I.*, along with various musical notations like slurs and accents.

Handwritten musical score for the third system, showing further development of the melodic and piano parts. It features a *pp* dynamic marking and a *steigerend* (crescendo) instruction.

Handwritten musical score for the fourth system, concluding the page. It includes the instruction *Nicht schleppen.* and shows the final notes of the melodic and piano parts.

(pp) *Fließend.*

Handwritten musical score for the first system, featuring a vocal line and piano accompaniment. The piano part includes markings for "cillo" and "espress.".

Handwritten musical score for the second system, continuing the vocal and piano parts. The piano part includes markings for "pp" and "cillo".

Zurückkehren. *Tempo I.* *pp*

Handwritten musical score for the third system, starting with a 3/2 time signature and the instruction "Zurückkehren." and "Tempo I.".

rit. *pp*

Handwritten musical score for the fourth system, featuring a vocal line and piano accompaniment. The piano part includes markings for "rit.", "pp", and "f".

Mit mächtigem Aufschwung. Più mosso.

Handwritten musical score for the fifth system, starting with a 2/2 time signature and the instruction "Mit mächtigem Aufschwung. Più mosso.".

or-esc. *f*

Handwritten musical score for the sixth system, featuring a vocal line and piano accompaniment. The piano part includes markings for "or-esc.", "f", and "ff".

sehr dringend

Tempo I. (dramatisch gütig in o)
stets mit stärkster Tonführung.

The first system consists of a vocal line in treble clef and piano accompaniment in bass clef, both in 2/2 time. The key signature has one sharp (F#). The piano part features a prominent arpeggiated figure in the right hand, with markings for forte (f) and dynamics like +9 and +10. The vocal line is sparse, with several whole notes.

The second system is primarily a vocal line in treble clef, in 4/2 time. It contains several whole notes and rests. There are some markings in the piano part below, including a forte (f) dynamic.

The third system shows piano accompaniment in both hands. The right hand has a complex arpeggiated figure with many notes, while the left hand has a simpler accompaniment. Dynamics include forte (f) and piano (p). There are also some markings like 'rit.' and 'p.p.'.

The fourth system is a vocal line in treble clef, in 2/2 time. It includes markings for 'Zurückhalten' (retardation) and 'Breit' (broad). The notes are mostly whole notes.

The fifth system shows piano accompaniment in both hands. The right hand has a complex arpeggiated figure, and the left hand has a simpler accompaniment. Dynamics include forte (f) and piano (p). There are also some markings like 'rit.' and 'p.p.'.

The sixth system is a vocal line in treble clef, in 2/2 time. It includes markings for 'rit.' (ritardando) and 'Largo'. The notes are mostly whole notes.

The seventh system shows piano accompaniment in both hands. The right hand has a complex arpeggiated figure, and the left hand has a simpler accompaniment. Dynamics include forte (f) and piano (p). There are also some markings like 'rit.' and 'p.p.'.

Aufführungsgang
gehalten

eil!

Um Mitternacht.

(Rückort)

NMA 5431
GUSTAV MAHLER ARCHIV

75152

Gustav Mahler.

Ausgabe für ^{Stimmen} *Ruhig, gleichmäßig.*

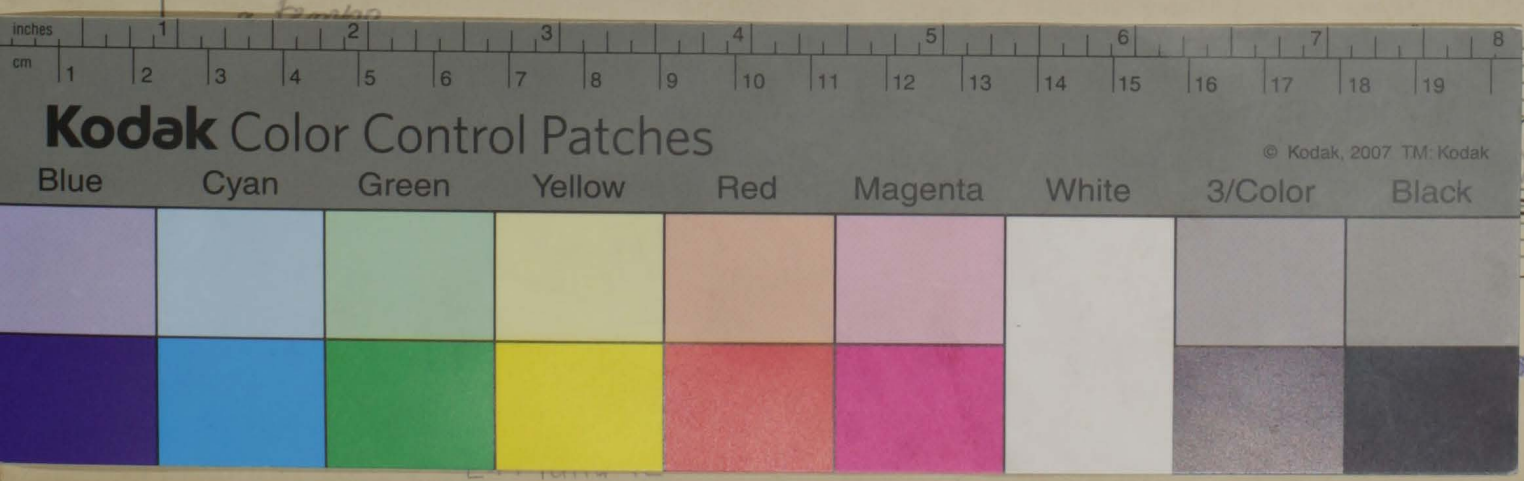
Sung

Platten pariser format

Clarinet

Sehr gehalten.

sehr gebunden etwas fließender.



Keine Nachfolger...

N/Rü 5t/31

Um Mitternacht/Singstimme und Klavier-tief

Stichvorlage ohne Text

4 Seiten auf unbezeichnetem Notenpapier

Platten-Nr. 7468 (in Handschrift)

N/Rü 5t/31

Um Mitternacht/Singstimme und Klavier-tief

Stichvorlage ohne Text

4 Seiten auf unbezeichnetem Notenpapier

Platten-Nr. 7468 (in Handschrift)

